

Transport and Positioning Solution

Modular linear motors for applications where heavier payloads and high speed are critical

QuickStick 500HT (High Thrust) Performance:

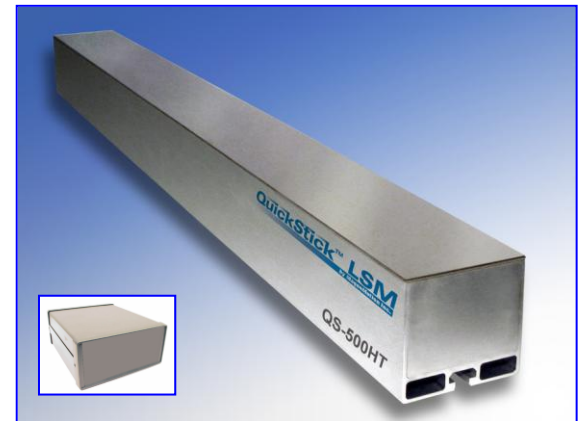
- ❑ Up to two vehicles per meter of QuickStick LSM with automatic queuing and singulation
- ❑ Payload: Up to 10,000 pounds (determined by array length and support structure)
- ❑ Motor and position-sensing in one package; separate drive and controller
- ❑ Vehicle and array length as short as 200 mm thrust: determined by array length
- ❑ Reaches speeds of up to 4 m/s (787 feet/minute)
- ❑ Acceleration up to 2 G (payload dependent)
- ❑ Repeatability at any location: ± 1 mm

Common Features of the QuickStick LSM Family:

- ❑ Higher throughput from greater acceleration/deceleration
- ❑ Curves, merge/diverge and rotary corners available with standard LSMs
- ❑ Less maintenance than conveyors (no transmission parts)
- ❑ Passive vehicles: no batteries wires or power transfer required
- ❑ Bi-directional travel
- ❑ No 'hard-stops' required for many operations
- ❑ 'Wireless' Precise Position-Sensing Technology creates collision-free environment
- ❑ Software configured move profiles for fast and easy change-overs
- ❑ Continuous feedback of vehicle position
- ❑ Independently controlled vehicles

Ease of Integration:

- ❑ Motors can be connected end-to-end for continuous runs (1 meter and 0.5 meter motor lengths available)
- ❑ Requires no external sensors, switches, or associated wiring for basic operation and position feedback
- ❑ Standard T-slot extrusion for ease of mounting in new or existing structures
- ❑ No programming needed to coordinate vehicle motion in queuing or release
- ❑ Non-captive vehicles can be added and removed as needed
- ❑ Ethernet communication or other standard serial bus options
- ❑ Compact and adaptable design



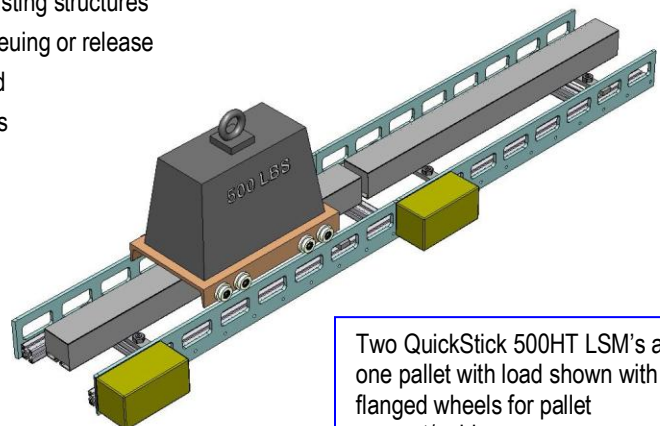
*QS-500HT drive and controller in separate

For information:

Ph: 978.757.9101

info@magnemotion.com

www.magnemotion.com



Two QuickStick 500HT LSM's and one pallet with load shown with flanged wheels for pallet support/guidance.